



3x LOGIC

VIGIL Client

Downloading VIGIL Client

VIGIL Client can be downloaded for free from the internet at <https://www.3xlogic.com/resource/software-download-center>

Scroll down the page until you find VIGIL Client Install - 315MB and click it to start the download. Once the file is downloaded open it to start the install process.

The screenshot shows the 3xLogic website's 'VIGIL Products' page. The navigation bar includes 'Industry', 'Solutions', 'Training', 'Support', 'News', and 'About'. Below the navigation, there are links for 'SUPPORT', 'ACCESS CONTROL', 'CAMERA FIRMWARE', 'VIGIL PRODUCTS', and 'UTILITES'. The main content area lists three products:

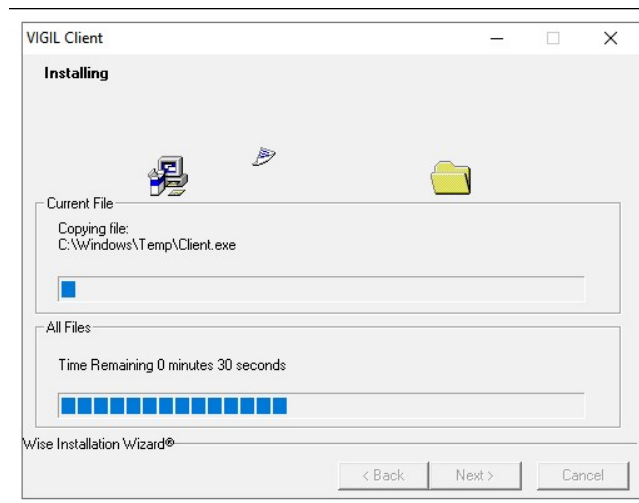
Version	Release Date	Product Name	Size
V.11.60.0300	4/13/2021	VIGIL Client Update	168MB
V.11.60.0300	4/13/2021	VIGIL Client Install	315MB
V.11.60.0300	4/13/2021	VIGIL DV Player	34MB

A red arrow points to the 'VIGIL Client Install - 315MB' link.

Just click accept and the installer will install everything that it needs to run on your computer.



This will create the icon pictured to the left on your desktop.

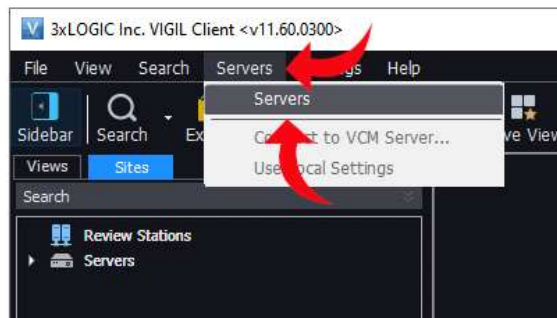
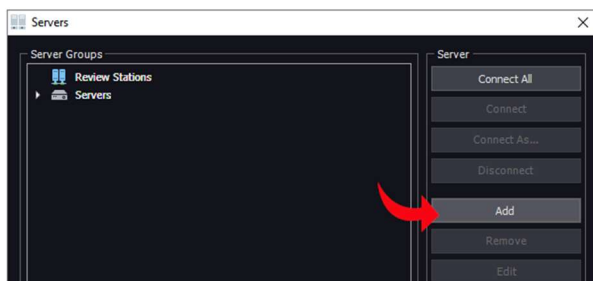


Double click the icon to start the program. The program will also show up in the start menu as "VIGIL Client"

Adding A Server

From the main screen you can add servers by clicking on “Servers” in the top bar

After you click Servers, Click “Servers” on the drop-down menu.

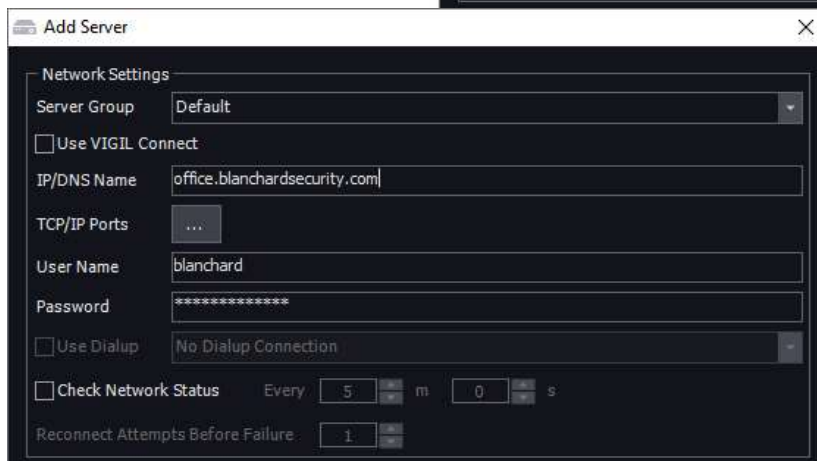
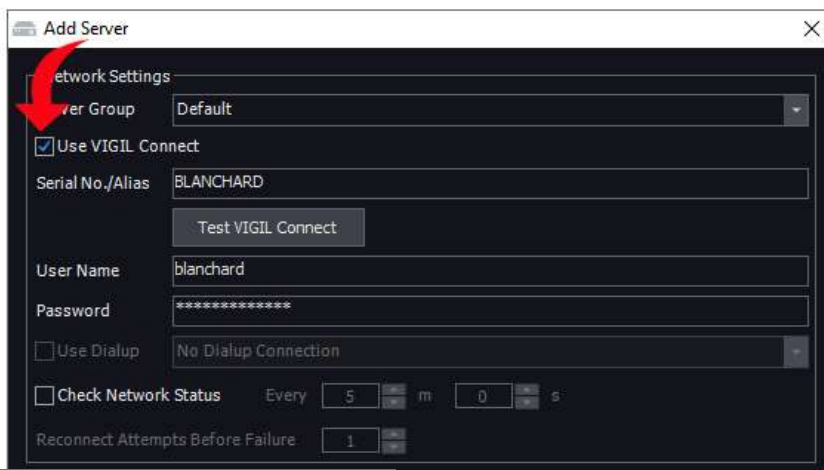


This will open the server screen. To add the sever click “Add”

This will open the “add servers” screen as pictured below

If you were given a VIGIL Connect alias (This will be in all caps) then click on “Use VIGIL Connect”. Enter your supplied username (all lower case) and Password then click OK. [See Right]

If you were given a blanchard security web address, then do not check “Use VIGIL connect”

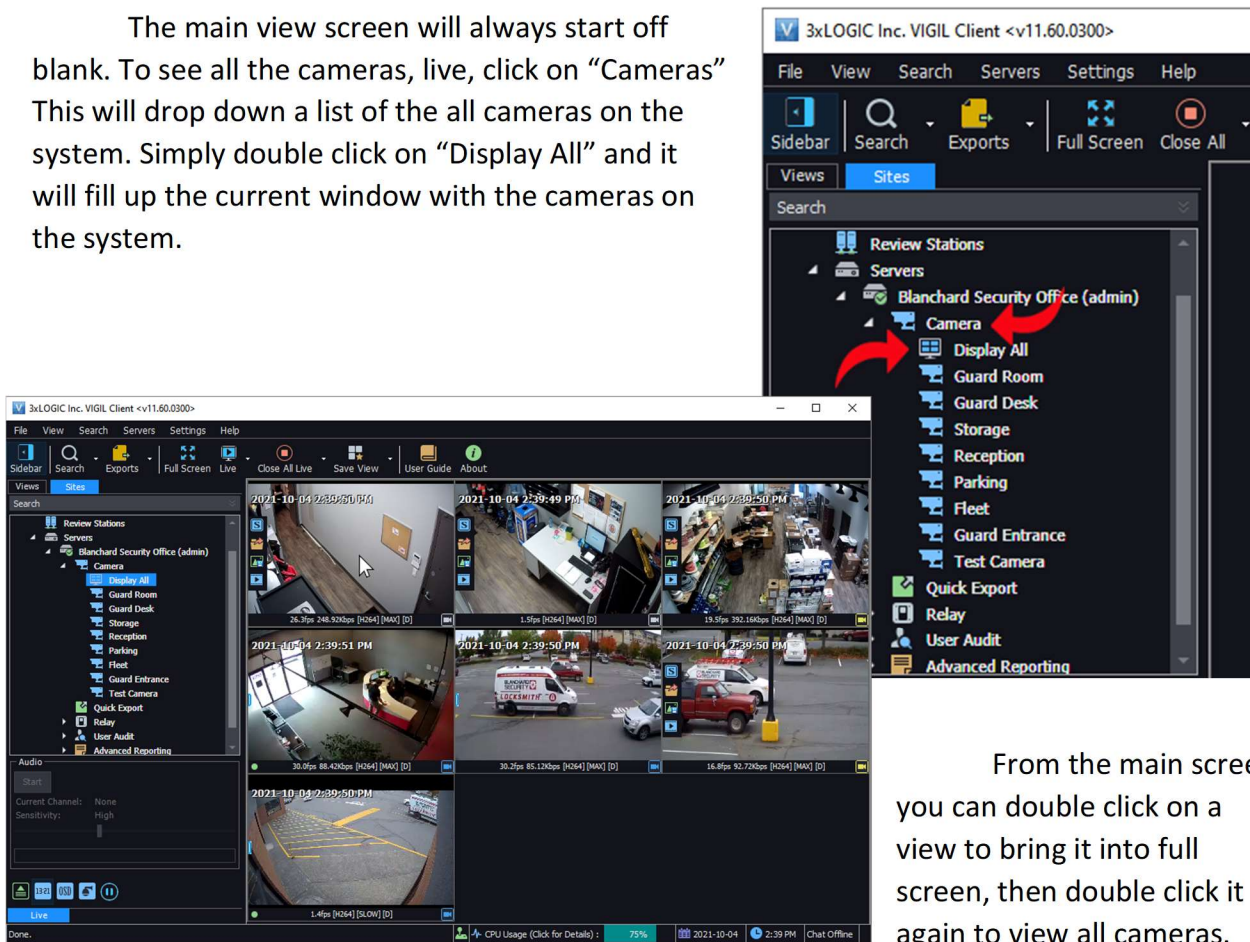


Instead enter the address in the IP Field. When you have entered the information click “Ok” at the bottom of the window [See left]

Back on the Servers screen, Click the X on the top of the window to return to the main screen.

The Main Screen

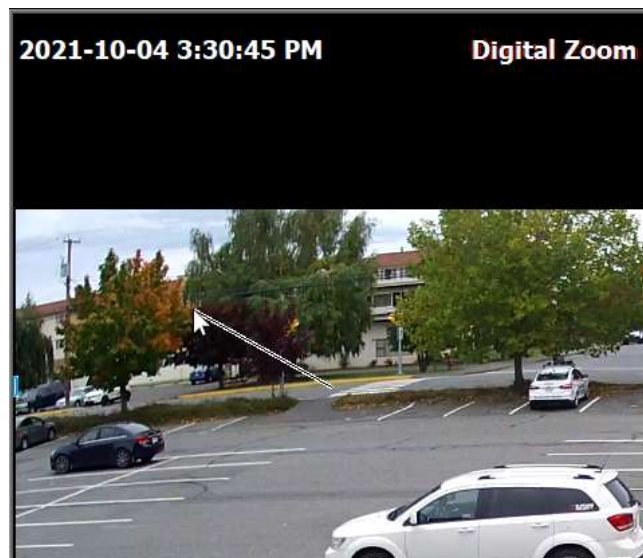
The main view screen will always start off blank. To see all the cameras, live, click on “Cameras” This will drop down a list of the all cameras on the system. Simply double click on “Display All” and it will fill up the current window with the cameras on the system.



From the main screen you can double click on a view to bring it into full screen, then double click it again to view all cameras.

You can digitally zoom in and out an image with the mouse wheel and pan the zoomed in section by dragging the mouse.

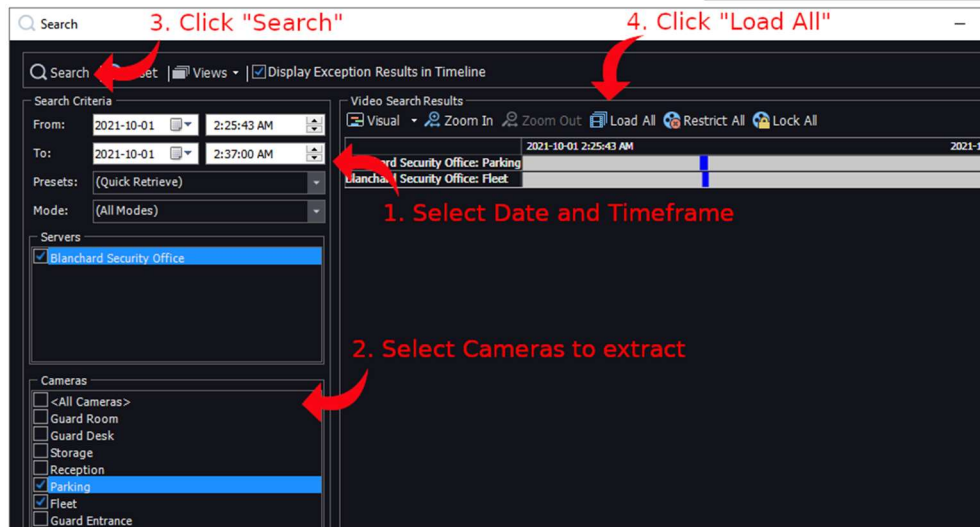
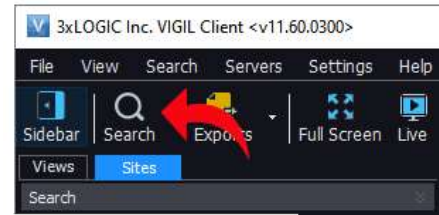
If you have a PTZ (Movable) camera you can move it around by dragging the mouse and zoom it in with the mouse wheel in the



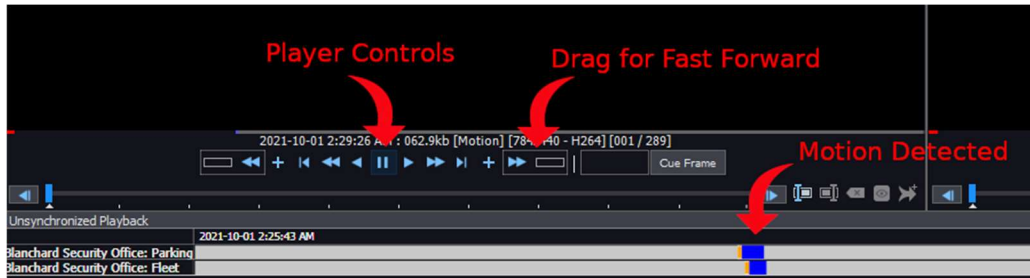
Replaying Video

To replay recorded video, click the “Search” icon in the tool bar. This will open the “Search” screen.

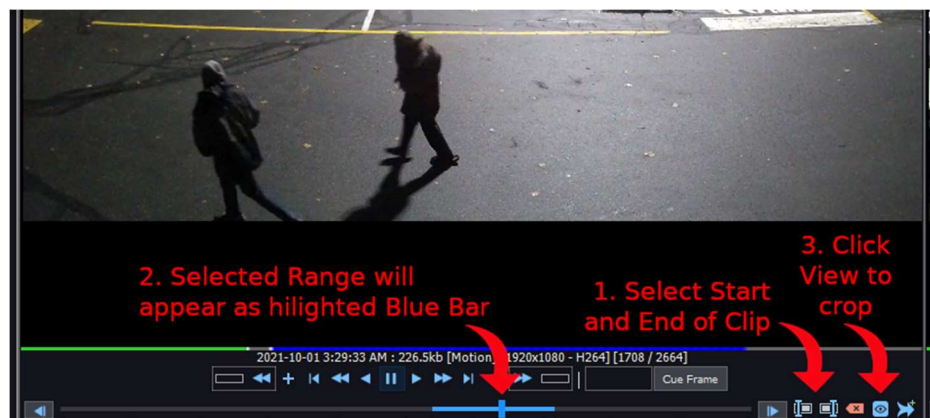
Select your timeframe, cameras and click “Search” as pictured below to load the selected video into the viewer.



This will open the selected cameras in their own playback windows. You can play, rewind or fast forward to find the event you wish to capture.

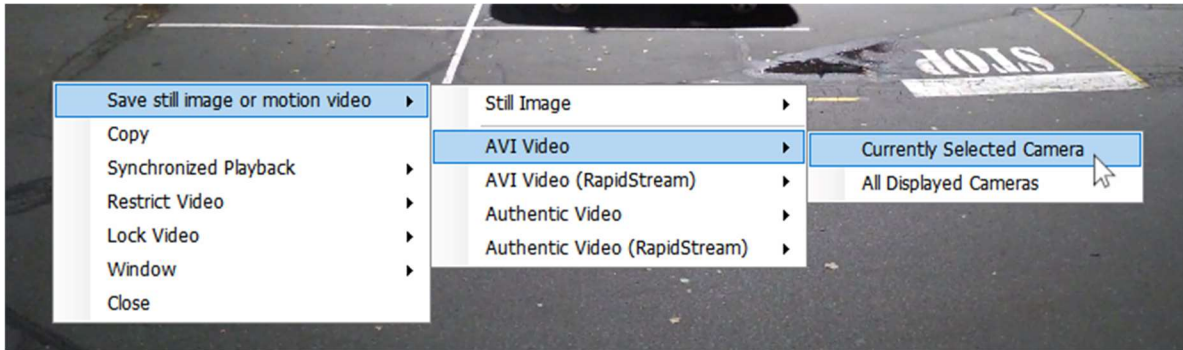


When you have found your event, you can click the “Start Range” and “End range” as you view the event. Click the “View” button to isolate the clip you want to capture

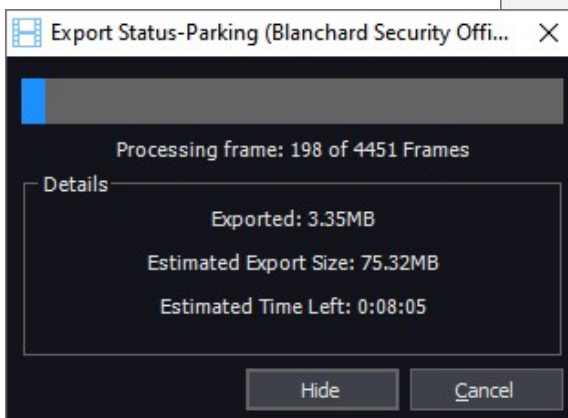
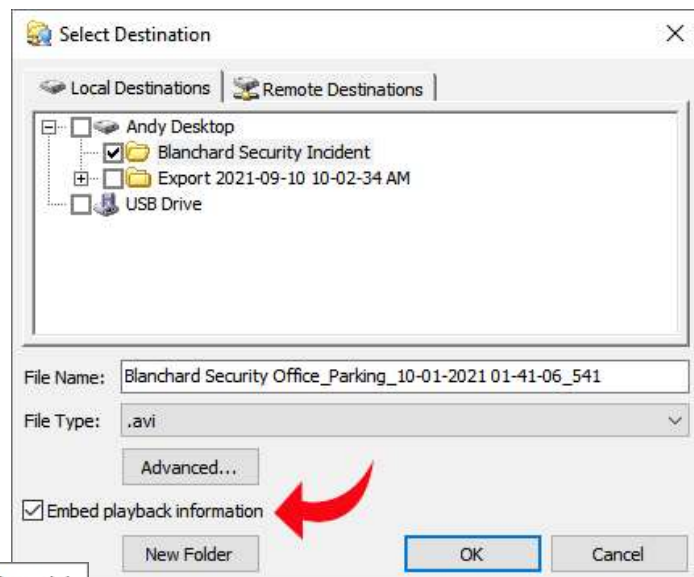


Saving Video Clips

Once you have the video you want to extract isolated, you can save the clip by right clicking on the video window then selecting “Save still image or motion video” “AVI Video” “Currently Selected Camera”



This will open the “Select Destination” screen. Ensure “Embed Playback Information” is checked so that your video will include the timestamps on playback. Select the folder you wish to extract to then select OK. If you would like to save the video to another folder, see the next section about Selecting Destinations

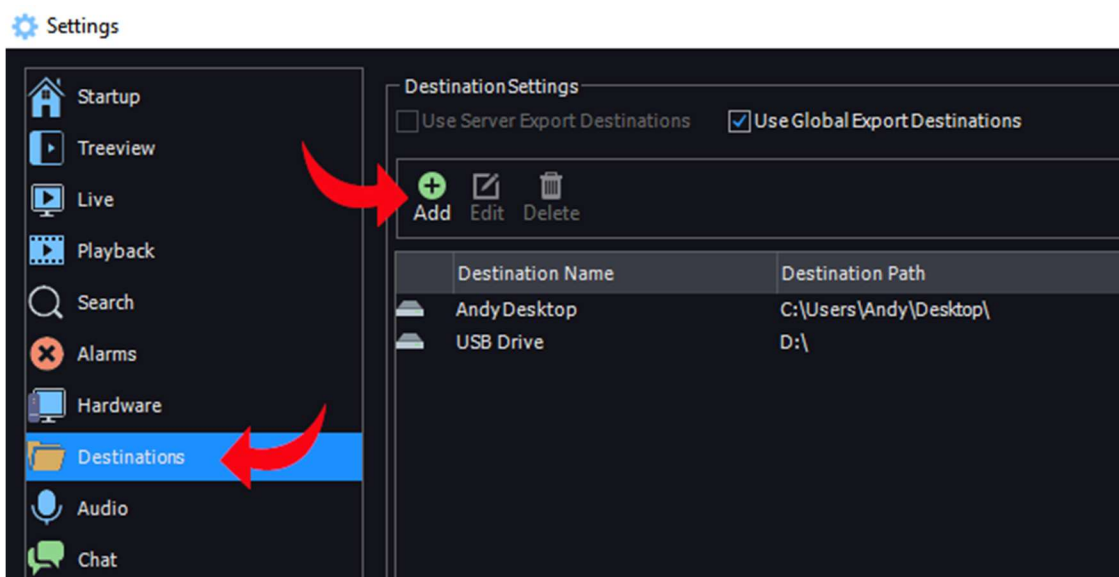
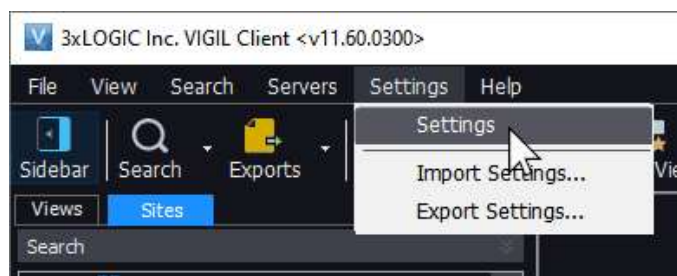


If you did everything correctly, you will see the “Export Status” popup telling you how much time is left before the extraction is completed.

Selecting Custom Destinations

To select a custom folder for extraction, click on the “Settings” drop down menu, then select “Settings”

In the “Settings” Menu click on “Destinations” then “Add” as pictured below



Select your folder using the Three Dots icon, then name your destination whatever you want.

In the example to the left, this will select an external USB drive attached to the computer. Click “OK” when done and you’ll permanently have this destination available to save to in the future.

